

Media Release: NZ Heavy Haulage Association

What do Purple and Amber Flashing Lights on Load Pilot Vehicles Mean?

An awareness video that includes information about the lights on load pilots with oversize loads has been released by the NZ Heavy Haulage Association.

Mark McNeilly, Chairman of the Association, and a heavy haulage company owner, said that for too long there had been a lack of knowledge in the wider freight sector about what other road users are required to do when they come across a load pilot vehicle coming towards them.

“If a driver sees a load pilot with purple and amber flashing lights coming towards them, this means that there is a load approaching that is at least 5m wide and will be taking up most of the road.”

The three minute safety video is specifically directed at other heavy vehicle road users to provide advice about what to do when they come across a pilot displaying purple and amber lights.

“With wider loads there will be at least two pilots ahead of the oversize load, and drivers are required to follow the instructions of the load pilots, for example, where to pull over and stop”.

He went on to say that load pilots will use the CB to call ahead to warn other truckies about the approaching oversize load. “While we know that many trucks these days are not fitted with CB radio, it is one of the useful tools that load pilots have to provide advance warning of the load”.

The safety and awareness video has been produced and released as a free resource for road users by the Association, and especially for other freight companies to utilise with their drivers, to provide knowledge as to what to expect with oversize loads being transported on the road.

“One of the other things to expect, is that often very heavy loads on transporters will be required to slow down and drive slowly over a bridge to ensure that the bridge is not damaged. At this time, we ask other road users to follow the instructions of the load pilots, to stop ahead of the bridge and be patient while the bridge is being crossed”.

The load pilot vehicles are there to provide sufficient warning to road users, and to give heavy vehicles additional time to slow down and stop when required.

The three minute “truckies” video, along with the two other variations of this video, are available from the Association’s YouTube site, as well as being on all other usual social media outlets.

www.youtube.com/@NZHeavyHaulageAssociation

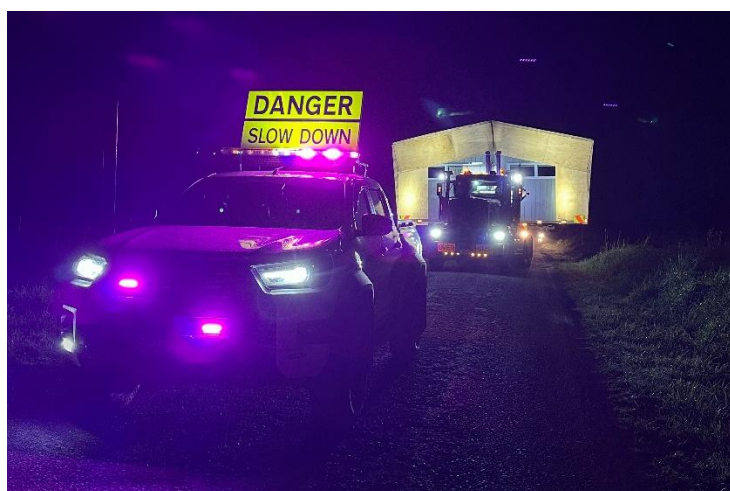


Image Credit: Goodwin Piloting Services

About NZ Heavy Haulage Association:

A national advocacy group for the oversize transport sector, including heavy haulage, house mover, load pilots, heavy recovery and general oversize transport sectors.

For more information: Jonathan Bhana-Thomson, Chief Executive, Ph 027 417 5554,
jonathan@hha.org.nz

www.hha.org.nz

www.linkedin.com/company/new-zealand-heavy-haulage-association-inc

<https://www.facebook.com/profile.php?id=100086780395915>